

Appendix D. Summary of Chinese White Dolphin Monitoring Results

CWD Small Vessel Line-transect Survey

Survey Effort Data

DATE	AREA	BEAU	KM SEARCHED	SEASON	VESSEL	TYPE
05-Apr-17	NWL	1	3.000	SPRING	32166	3RS ET
05-Apr-17	NWL	2	38.728	SPRING	32166	3RS ET
05-Apr-17	NWL	3	32.700	SPRING	32166	3RS ET
10-Apr-17	AW	2	1.920	SPRING	32166	3RS ET
10-Apr-17	AW	3	1.090	SPRING	32166	3RS ET
10-Apr-17	AW	4	1.810	SPRING	32166	3RS ET
10-Apr-17	WL	3	24.720	SPRING	32166	3RS ET
10-Apr-17	WL	4	8.880	SPRING	32166	3RS ET
10-Apr-17	SWL	2	8.940	SPRING	32166	3RS ET
10-Apr-17	SWL	3	3.360	SPRING	32166	3RS ET
11-Apr-17	SWL	1	20.090	SPRING	32166	3RS ET
11-Apr-17	SWL	2	32.090	SPRING	32166	3RS ET
11-Apr-17	SWL	3	4.900	SPRING	32166	3RS ET
12-Apr-17	NEL	1	13.483	SPRING	32166	3RS ET
12-Apr-17	NEL	2	26.217	SPRING	32166	3RS ET
12-Apr-17	NEL	3	7.300	SPRING	32166	3RS ET
18-Apr-17	AW	3	4.870	SPRING	32166	3RS ET
18-Apr-17	WL	2	25.679	SPRING	32166	3RS ET
18-Apr-17	WL	3	4.960	SPRING	32166	3RS ET
18-Apr-17	SWL	1	0.821	SPRING	32166	3RS ET
18-Apr-17	SWL	2	5.049	SPRING	32166	3RS ET
24-Apr-17	NEL	2	26.150	SPRING	32166	3RS ET
24-Apr-17	NEL	3	20.650	SPRING	32166	3RS ET
25-Apr-17	NWL	2	1.100	SPRING	32166	3RS ET
25-Apr-17	NWL	3	35.320	SPRING	32166	3RS ET
25-Apr-17	NWL	4	38.880	SPRING	32166	3RS ET
26-Apr-17	SWL	1	1.400	SPRING	32166	3RS ET
26-Apr-17	SWL	2	40.231	SPRING	32166	3RS ET
26-Apr-17	SWL	3	20.409	SPRING	32166	3RS ET
04-May-17	SWL	1	1.190	SPRING	32166	3RS ET
04-May-17	SWL	2	43.260	SPRING	32166	3RS ET
04-May-17	SWL	3	17.450	SPRING	32166	3RS ET
05-May-17	AW	1	5.010	SPRING	32166	3RS ET
05-May-17	WL	2	24.605	SPRING	32166	3RS ET
05-May-17	WL	3	7.320	SPRING	32166	3RS ET
05-May-17	SWL	1	2.630	SPRING	32166	3RS ET
05-May-17	SWL	2	4.260	SPRING	32166	3RS ET
08-May-17	NWL	3	51.352	SPRING	32166	3RS ET
08-May-17	NWL	4	24.048	SPRING	32166	3RS ET
09-May-17	NEL	2	40.300	SPRING	32166	3RS ET
09-May-17	NEL	3	7.100	SPRING	32166	3RS ET
11-May-17	AW	1	4.590	SPRING	32166	3RS ET
11-May-17	WL	1	13.043	SPRING	32166	3RS ET
11-May-17	WL	2	2.621	SPRING	32166	3RS ET
11-May-17	WL	3	7.059	SPRING	32166	3RS ET
11-May-17	WL	4	5.220	SPRING	32166	3RS ET
11-May-17	SWL	2	0.520	SPRING	32166	3RS ET

DATE	AREA	BEAU	KM SEARCHED	SEASON	VESSEL	TYPE
11-May-17	SWL	3	2.050	SPRING	32166	3RS ET
11-May-17	SWL	4	2.970	SPRING	32166	3RS ET
17-May-17	NWL	1	8.700	SPRING	32166	3RS ET
17-May-17	NWL	2	60.600	SPRING	32166	3RS ET
17-May-17	NWL	3	6.300	SPRING	32166	3RS ET
22-May-17	NEL	2	6.960	SPRING	32166	3RS ET
22-May-17	NEL	3	27.140	SPRING	32166	3RS ET
22-May-17	NEL	4	12.700	SPRING	32166	3RS ET
23-May-17	SWL	2	26.840	SPRING	32166	3RS ET
23-May-17	SWL	3	33.160	SPRING	32166	3RS ET
07-Jun-17	SWL	2	33.230	SUMMER	32166	3RS ET
07-Jun-17	SWL	3	27.200	SUMMER	32166	3RS ET
07-Jun-17	SWL	4	1.900	SUMMER	32166	3RS ET
08-Jun-17	NWL	2	29.074	SUMMER	32166	3RS ET
08-Jun-17	NWL	3	26.566	SUMMER	32166	3RS ET
08-Jun-17	NWL	4	18.660	SUMMER	32166	3RS ET
08-Jun-17	NWL	5	1.100	SUMMER	32166	3RS ET
09-Jun-17	AW	1	1.040	SUMMER	32166	3RS ET
09-Jun-17	AW	2	3.900	SUMMER	32166	3RS ET
09-Jun-17	WL	1	2.850	SUMMER	32166	3RS ET
09-Jun-17	WL	2	5.782	SUMMER	32166	3RS ET
09-Jun-17	WL	3	13.859	SUMMER	32166	3RS ET
09-Jun-17	WL	4	8.589	SUMMER	32166	3RS ET
09-Jun-17	WL	5	0.920	SUMMER	32166	3RS ET
09-Jun-17	SWL	2	0.521	SUMMER	32166	3RS ET
09-Jun-17	SWL	3	1.399	SUMMER	32166	3RS ET
09-Jun-17	SWL	4	4.060	SUMMER	32166	3RS ET
12-Jun-17	NEL	2	1.100	SUMMER	32166	3RS ET
12-Jun-17	NEL	3	28.890	SUMMER	32166	3RS ET
12-Jun-17	NEL	4	7.910	SUMMER	32166	3RS ET
15-Jun-17	NEL	1	4.600	SUMMER	32166	3RS ET
15-Jun-17	NEL	2	37.200	SUMMER	32166	3RS ET
22-Jun-17	SWL	2	25.837	SUMMER	32166	3RS ET
22-Jun-17	SWL	3	29.935	SUMMER	32166	3RS ET
22-Jun-17	SWL	4	2.840	SUMMER	32166	3RS ET
23-Jun-17	NWL	2	37.550	SUMMER	32166	3RS ET
23-Jun-17	NWL	3	31.360	SUMMER	32166	3RS ET
23-Jun-17	NWL	4	4.790	SUMMER	32166	3RS ET
23-Jun-17	NEL	2	4.930	SUMMER	32166	3RS ET
23-Jun-17	NEL	3	2.930	SUMMER	32166	3RS ET
28-Jun-17	AW	2	4.750	SUMMER	32166	3RS ET
28-Jun-17	WL	2	4.697	SUMMER	32166	3RS ET
28-Jun-17	WL	3	16.707	SUMMER	32166	3RS ET
28-Jun-17	WL	4	8.280	SUMMER	32166	3RS ET
28-Jun-17	SWL	3	4.960	SUMMER	32166	3RS ET

CWD Small Vessel Line-transect Survey

Sighting Data

DATE	STG #	TIME	CWD/FP	GP SZ	AREA	BEAU	PSD	EFFORT	TYPE	DEC LAT	DEC LON	SEASON	BOAT ASSOC.
05-Apr-17	1	1132	CWD	2	NWL	2	128	ON	3RS ET	22.3787	113.8765	SPRING	NONE
05-Apr-17	2	1147	CWD	3	NWL	2	16	ON	3RS ET	22.3827	113.8768	SPRING	NONE
11-Apr-17	1	1042	FP	1	SWL	1	336	ON	3RS ET	22.1801	113.9363	SPRING	NONE
11-Apr-17	2	1051	FP	6	SWL	1	3	ON	3RS ET	22.1699	113.9359	SPRING	NONE
11-Apr-17	3	1103	FP	5	SWL	1	43	ON	3RS ET	22.1561	113.9358	SPRING	NONE
11-Apr-17	4	1212	FP	5	SWL	2	363	ON	3RS ET	22.1480	113.9180	SPRING	NONE
18-Apr-17	1	1023	CWD	1	WL	3	17	ON	3RS ET	22.2698	113.8441	SPRING	NONE
18-Apr-17	2	1047	CWD	7	WL	2	580	ON	3RS ET	22.2605	113.8488	SPRING	NONE
18-Apr-17	3	1113	CWD	5	WL	2	277	ON	3RS ET	22.2578	113.8378	SPRING	NONE
18-Apr-17	4	1246	CWD	3	WL	2	278	ON	3RS ET	22.1873	113.8417	SPRING	NONE
18-Apr-17	5	1302	CWD	5	WL	2	450	ON	3RS ET	22.1870	113.8378	SPRING	NONE
18-Apr-17	6	1330	CWD	2	SWL	2	40	ON	3RS ET	22.1831	113.8499	SPRING	NONE
18-Apr-17	7	1406	CWD	2	SWL	2	512	ON	3RS ET	22.1925	113.8595	SPRING	NONE
26-Apr-17	1	1022	CWD	1	SWL	2	48	ON	3RS ET	22.2170	113.9356	SPRING	PURSE SEINE
26-Apr-17	2	1224	FP	2	SWL	2	89	ON	3RS ET	22.1526	113.9068	SPRING	NONE
26-Apr-17	3	1441	CWD	3	SWL	3	55	ON	3RS ET	22.1699	113.8684	SPRING	NONE
26-Apr-17	4	1456	CWD	2	SWL	3	755	ON	3RS ET	22.1692	113.8691	SPRING	NONE
04-May-17	1	1423	CWD	2	SWL	1	318	ON	3RS ET	22.2114	113.8839	SPRING	NONE
05-May-17	1	1032	CWD	11	WL	3	143	ON	3RS ET	22.2318	113.8279	SPRING	NONE
05-May-17	2	1121	CWD	3	WL	2	263	ON	3RS ET	22.2231	113.8363	SPRING	NONE
05-May-17	3	1135	CWD	1	WL	2	271	ON	3RS ET	22.2230	113.8263	SPRING	NONE
05-May-17	4	1211	CWD	5	WL	2	343	ON	3RS ET	22.2053	113.8398	SPRING	NONE
05-May-17	5	1305	CWD	7	WL	2	650	ON	3RS ET	22.1966	113.8405	SPRING	NONE
11-May-17	1	1041	CWD	1	WL	1	171	ON	3RS ET	22.2598	113.8467	SPRING	NONE
11-May-17	2	1118	CWD	9	WL	1	800	ON	3RS ET	22.2466	113.8511	SPRING	NONE
11-May-17	3	1148	CWD	13	WL	2	442	ON	3RS ET	22.2414	113.8442	SPRING	NONE
11-May-17	4	1217	CWD	6	WL	2	118	ON	3RS ET	22.2407	113.8333	SPRING	NONE
11-May-17	5	1228	CWD	6	WL	1	79	ON	3RS ET	22.2378	113.8266	SPRING	NONE
11-May-17	6	1236	CWD	7	WL	2	760	ON	3RS ET	22.2316	113.8287	SPRING	NONE
11-May-17	7	1315	CWD	9	WL	3	306	ON	3RS ET	22.2231	113.8195	SPRING	NONE
11-May-17	8	1335	CWD	11	WL	3	26	ON	3RS ET	22.2157	113.8177	SPRING	NONE







DATE	STG #	TIME	CWD/FP	GP SZ	AREA	BEAU	PSD	EFFORT	TYPE	DEC LAT	DEC LON	SEASON	BOAT ASSOC.
11-May-17	9	1432	CWD	6	WL	3	1021	ON	3RS ET	22.1867	113.8433	SPRING	NONE
11-May-17	10	1513	CWD	6	SWL	4	409	ON	3RS ET	22.1827	113.8498	SPRING	NONE
11-May-17	11	1543	CWD	4	SWL	3	354	ON	3RS ET	22.1967	113.8590	SPRING	NONE
23-May-17	1	1115	CWD	2	SWL	3	1472	ON	3RS ET	22.1802	113.9281	SPRING	NONE
23-May-17	2	1459	CWD	2	SWL	2	N/A	OFF	3RS ET	22.2029	113.8976	SPRING	NONE
07-Jun-17	1	1224	CWD	1	SWL	2	N/A	OFF	3RS ET	22.1766	113.9070	SUMMER	NONE
07-Jun-17	2	1249	CWD	6	SWL	2	125	ON	3RS ET	22.2030	113.9079	SUMMER	NONE
07-Jun-17	3	1507	CWD	2	SWL	2	116	ON	3RS ET	22.2007	113.8684	SUMMER	NONE
08-Jun-17	1	1202	CWD	2	NWL	3	362	ON	3RS ET	22.3993	113.8889	SUMMER	NONE
09-Jun-17	1	1106	CWD	5	WL	2	846	ON	3RS ET	22.2413	113.8450	SUMMER	NONE
09-Jun-17	2	1207	CWD	2	WL	4	138	ON	3RS ET	22.2311	113.8382	SUMMER	NONE
09-Jun-17	3	1240	CWD	3	WL	3	44	ON	3RS ET	22.2120	113.8372	SUMMER	NONE
09-Jun-17	4	1358	CWD	5	SWL	3	6	ON	3RS ET	22.1915	113.8592	SUMMER	NONE
22-Jun-17	1	1026	CWD	9	SWL	2	620	ON	3RS ET	22.2094	113.9364	SUMMER	NONE
22-Jun-17	2	1200	CWD	3	SWL	3	11	ON	3RS ET	22.2054	113.9266	SUMMER	NONE
22-Jun-17	3	1212	CWD	1	SWL	3	67	ON	3RS ET	22.2055	113.9258	SUMMER	NONE
22-Jun-17	4	1222	CWD	1	SWL	3	25	ON	3RS ET	22.2053	113.9191	SUMMER	NONE
22-Jun-17	5	1230	CWD	2	SWL	2	64	ON	3RS ET	22.2026	113.9178	SUMMER	NONE
22-Jun-17	6	1248	CWD	1	SWL	2	720	ON	3RS ET	22.1941	113.9184	SUMMER	NONE
22-Jun-17	7	1354	CWD	2	SWL	2	28	ON	3RS ET	22.1916	113.9083	SUMMER	NONE
22-Jun-17	8	1406	CWD	3	SWL	2	5	ON	3RS ET	22.2063	113.9061	SUMMER	NONE
23-Jun-17	1	1001	CWD	1	NWL	2	72	ON	3RS ET	22.3476	113.8690	SUMMER	NONE
23-Jun-17	2	1212	CWD	2	NWL	3	17	ON	3RS ET	22.4073	113.8882	SUMMER	NONE
28-Jun-17	1	1028	CWD	3	WL	3	869	ON	3RS ET	22.2694	113.8568	SUMMER	NONE
28-Jun-17	2	1047	CWD	3	WL	2	65	ON	3RS ET	22.2649	113.8580	SUMMER	NONE
28-Jun-17	3	1119	CWD	5	WL	3	49	ON	3RS ET	22.2480	113.8515	SUMMER	NONE
28-Jun-17	4	1141	CWD	2	WL	3	250	ON	3RS ET	22.2411	113.8454	SUMMER	NONE
28-Jun-17	5	1201	CWD	2	WL	3	4	ON	3RS ET	22.2321	113.8296	SUMMER	NONE
28-Jun-17	6	1214	CWD	5	WL	4	482	ON	3RS ET	22.2232	113.8342	SUMMER	NONE
28-Jun-17	7	1250	CWD	2	WL	3	441	ON	3RS ET	22.2144	113.8268	SUMMER	NONE
28-Jun-17	8	1330	CWD	5	WL	3	224	ON	3RS ET	22.1953	113.8375	SUMMER	NONE
28-Jun-17	9	1428	CWD	1	SWL	3	1164	ON	3RS ET	22.1831	113.8593	SUMMER	NONE

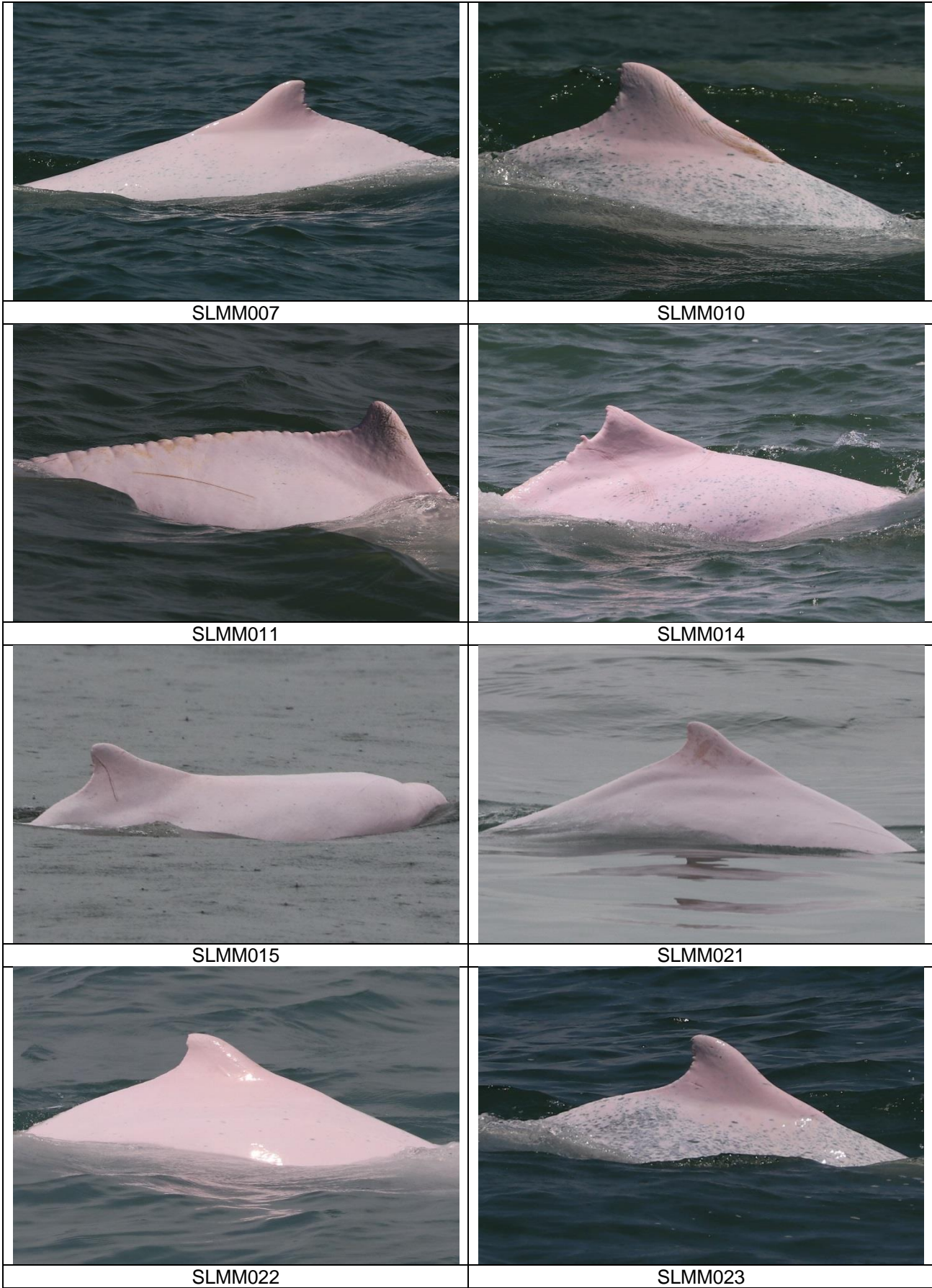
Abbreviations: STG# = Sighting Number; GP SZ = Dolphin Group Size; BEAU = Beaufort Sea State; PSD = Perpendicular Distance (in metres); N/A = Not Applicable; DEC LAT = Latitude (WGS84 in Decimal), DEC LON = Longitude (WGS84 in Decimal); BOAT ASSOC. = Fishing Boat Association

Sighting data of finless porpoise (FP) are presented for reference only. No relevant figure or text will be mentioned in the quarterly EM&A report. All FP sightings are excluded in calculation.

CWD Small Vessel Line-transect Survey

Photo Identification

	
NLMM001	NLMM004
	
NLMM006	NLMM013
	
NLMM016	NLMM023





SLMM027



SLMM028



SLMM031



SLMM036



SLMM040



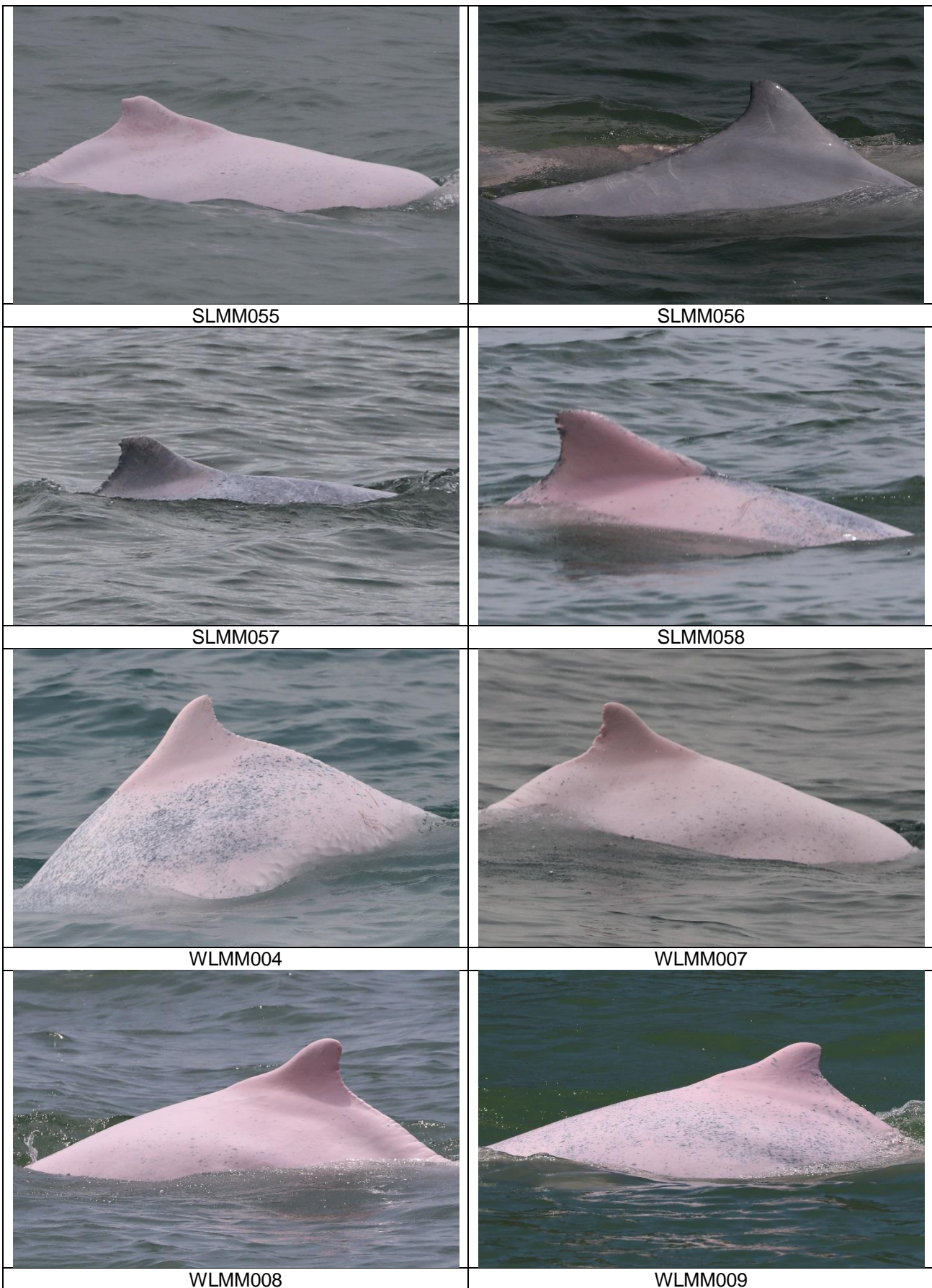
SLMM047

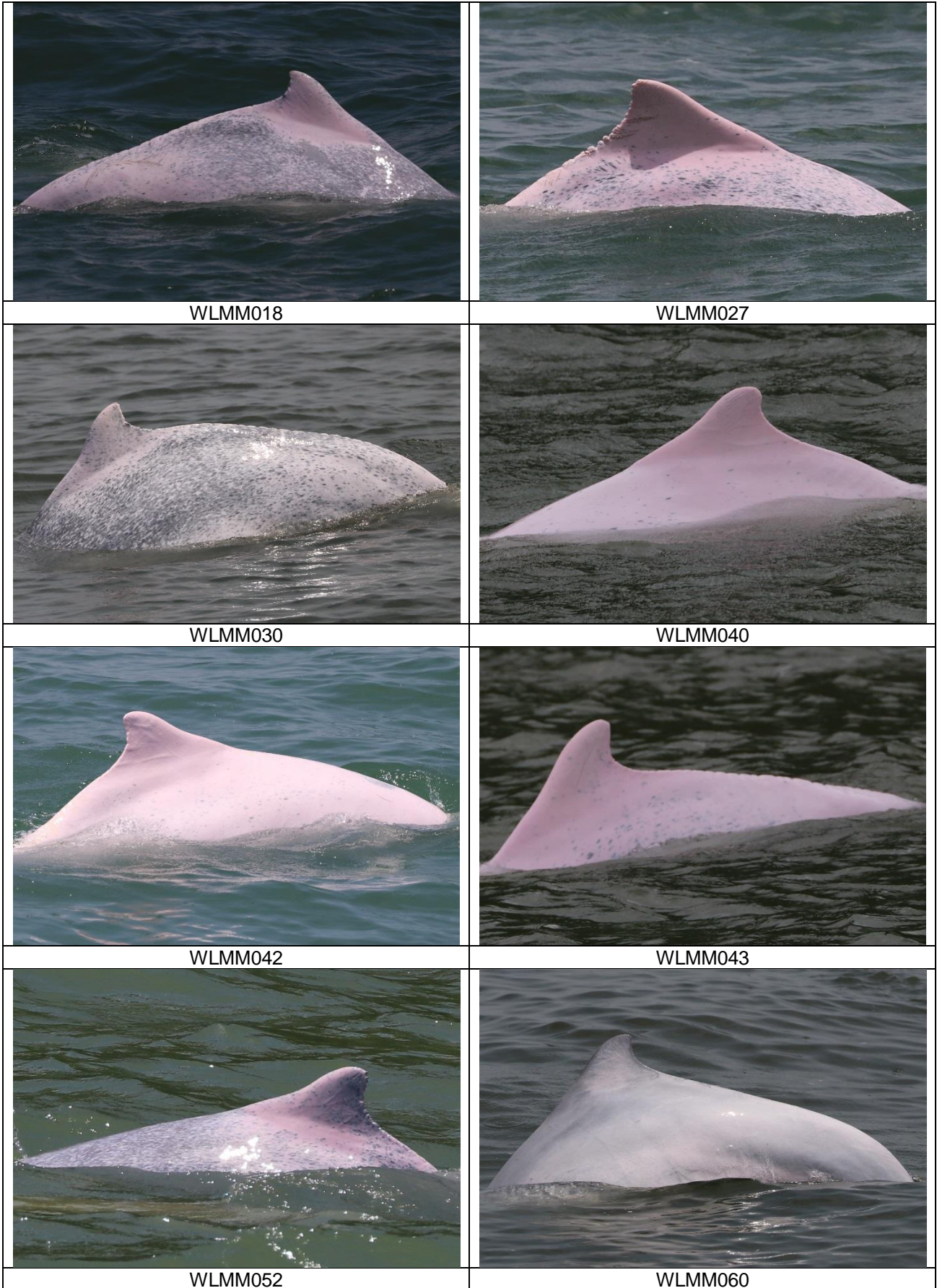


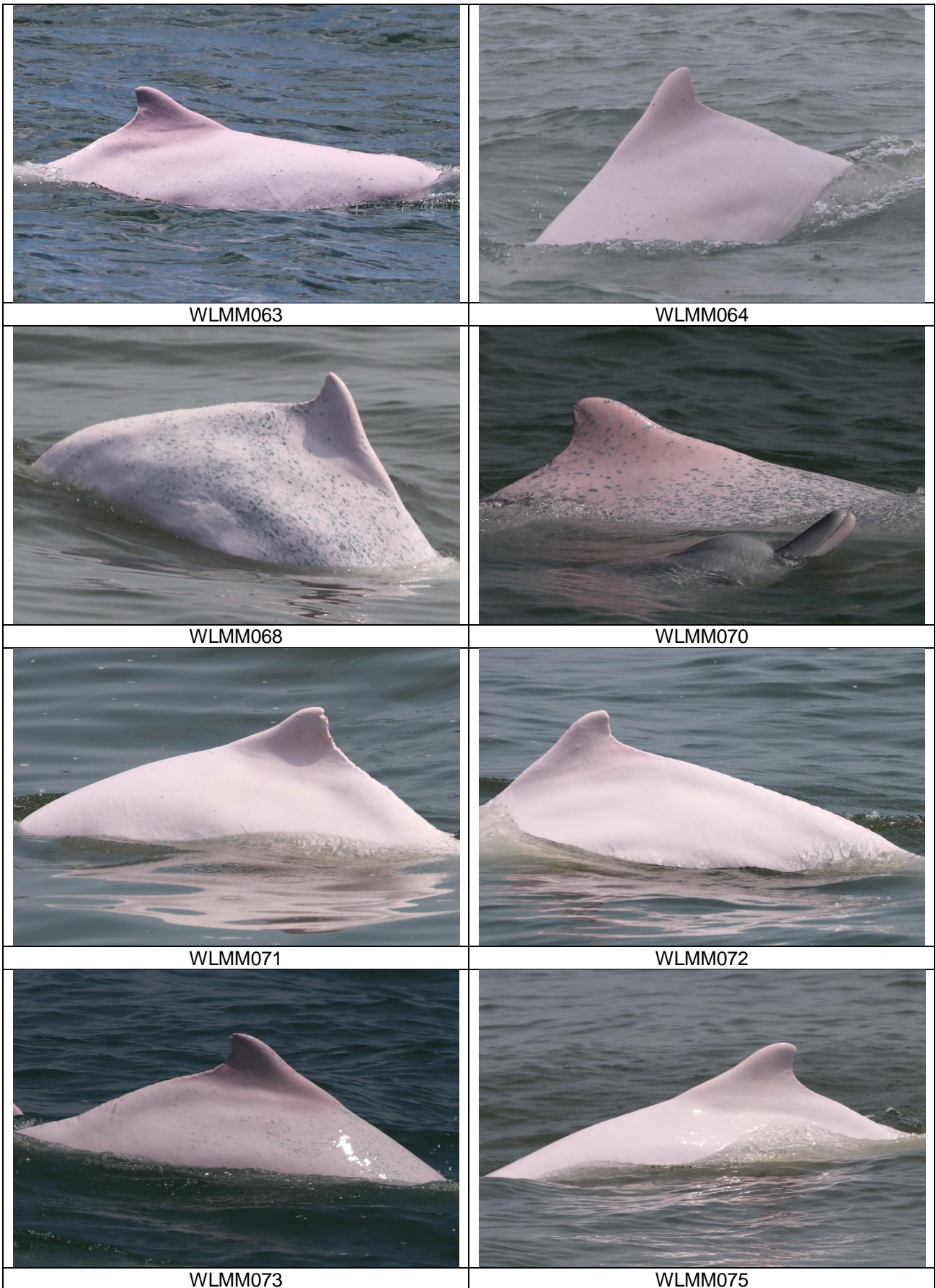
SLMM052

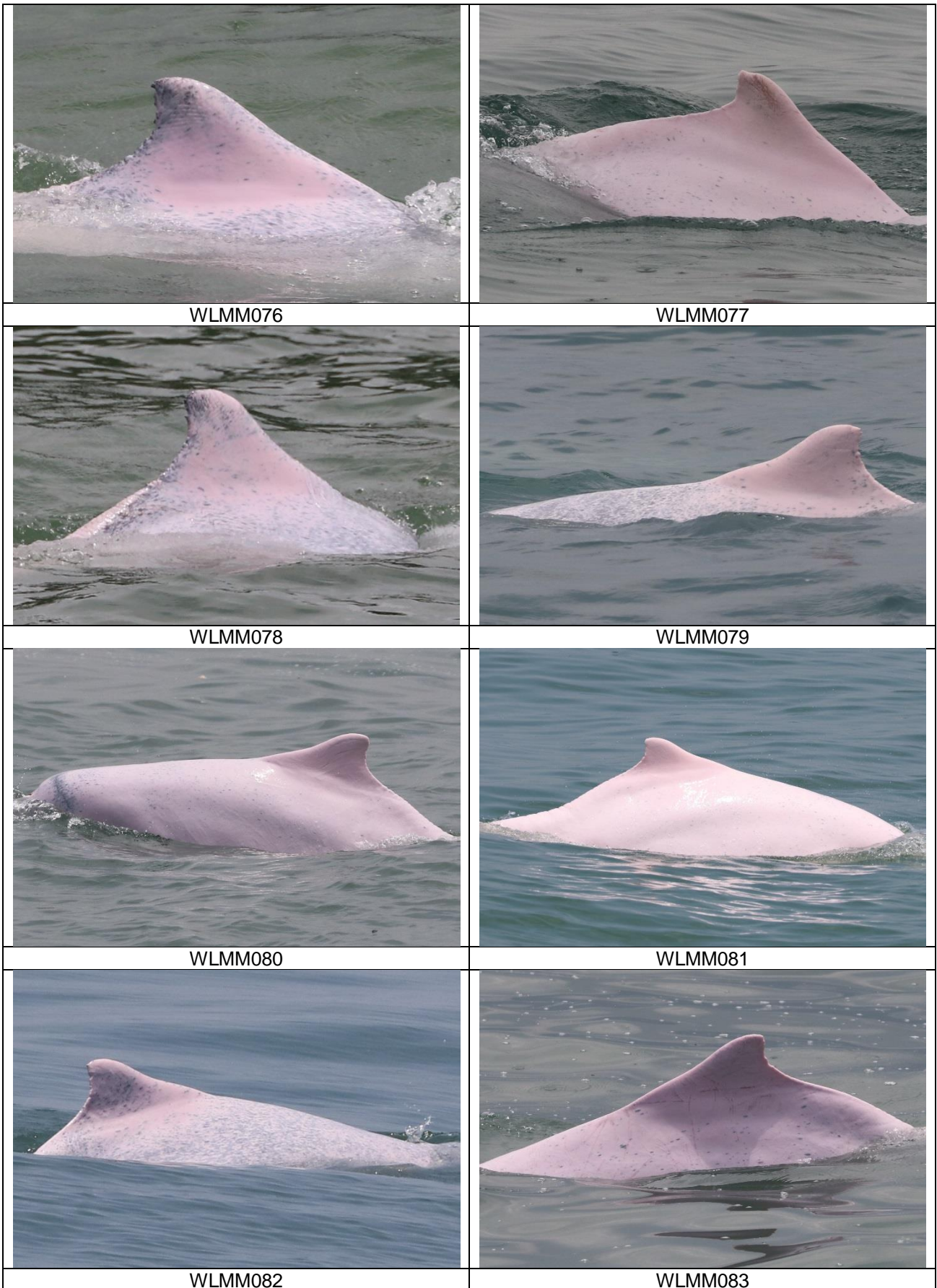


SLMM054











WLMM084



WLMM085



WLMM086



WLMM087



WLMM088








WLMM089



WLMM090



WLMM091

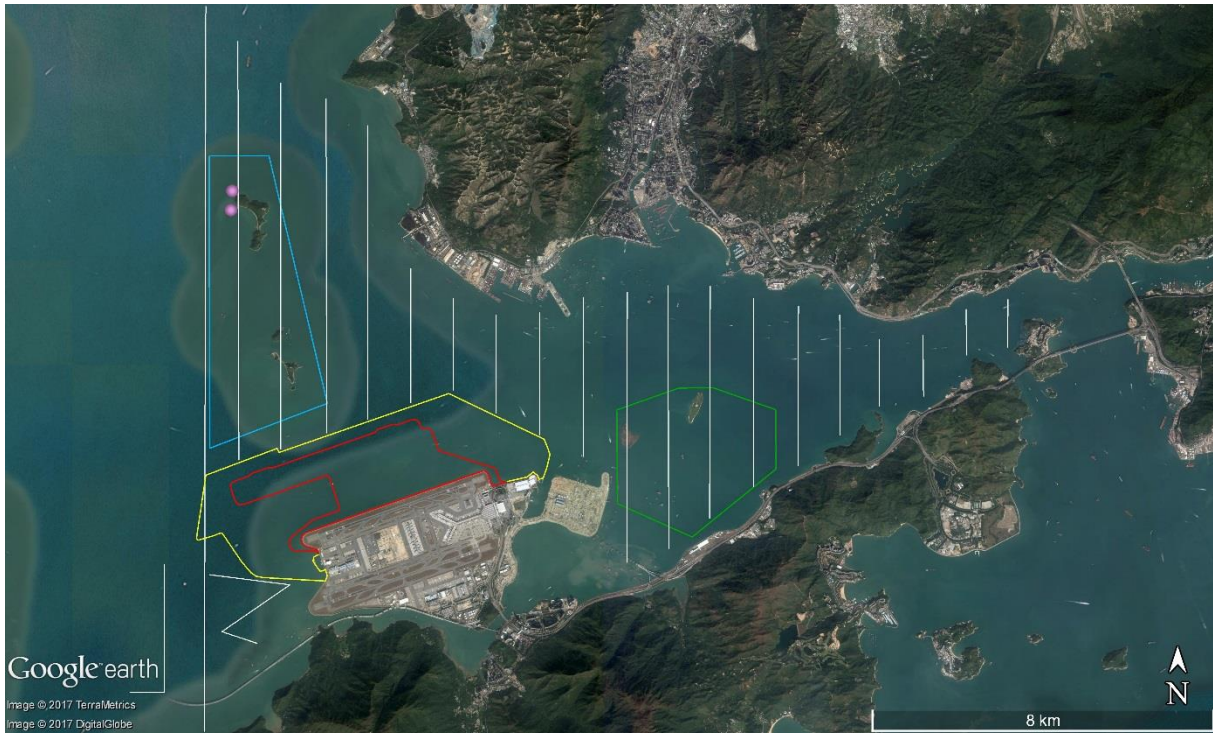
	
WLMM092	WLMM093
	
WLMM094	WLMM095
	
WLMM096	

CWD Small Vessel Line-transect Survey

Photo Identification – Re-sighting Locations

[Pink circle: Sighting locations of individual dolphin, White line: Vessel survey transects, Blue polygon: Sha Chau and Lung Kwu Chau Marine Park (SCLKCMP), Green polygon: Brothers Marine Park (BMP), Red polygon: 3RS land-formation footprint, Yellow line: 3RS temporary works area boundary]

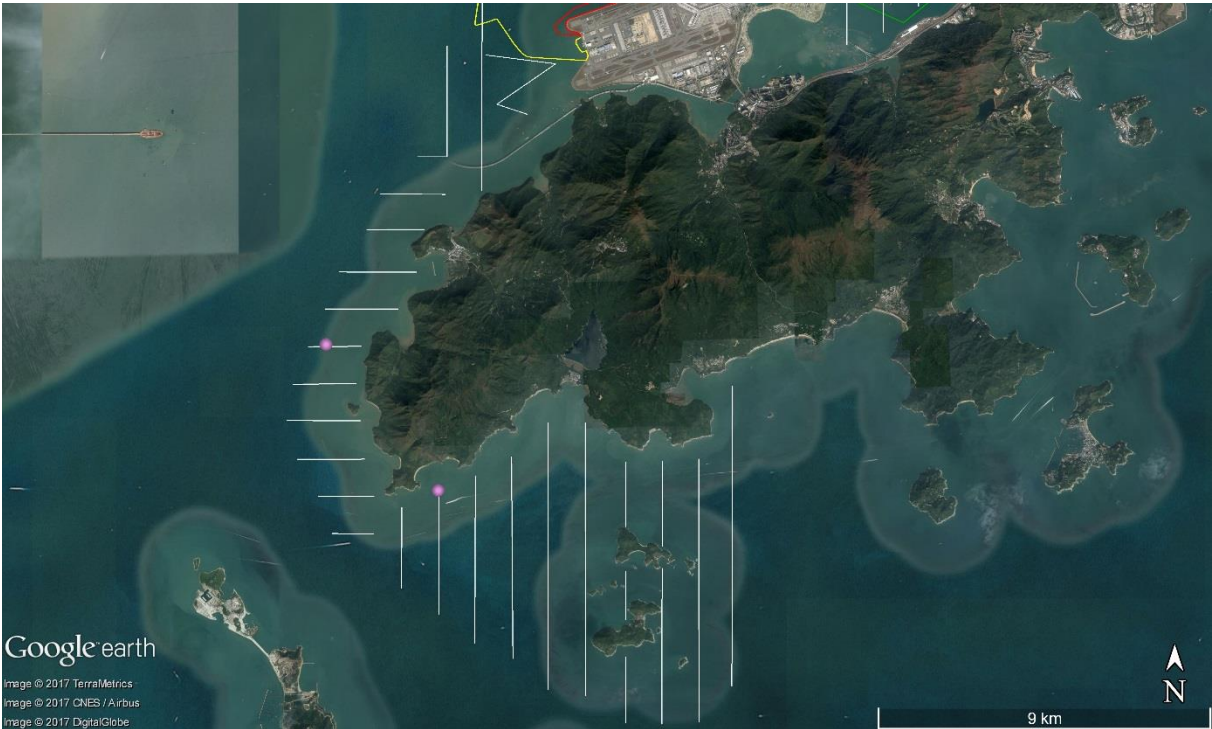
NLMM004



NLMM016



SLMM011



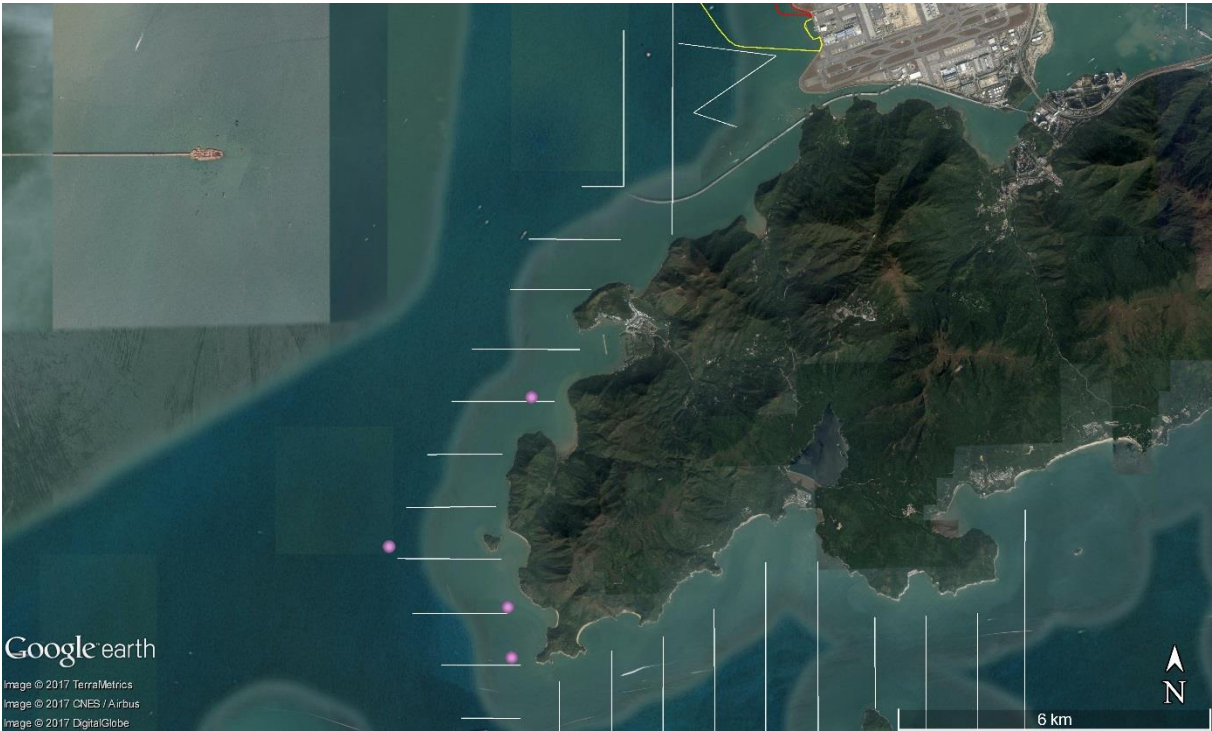
SLMM014



SLMM022



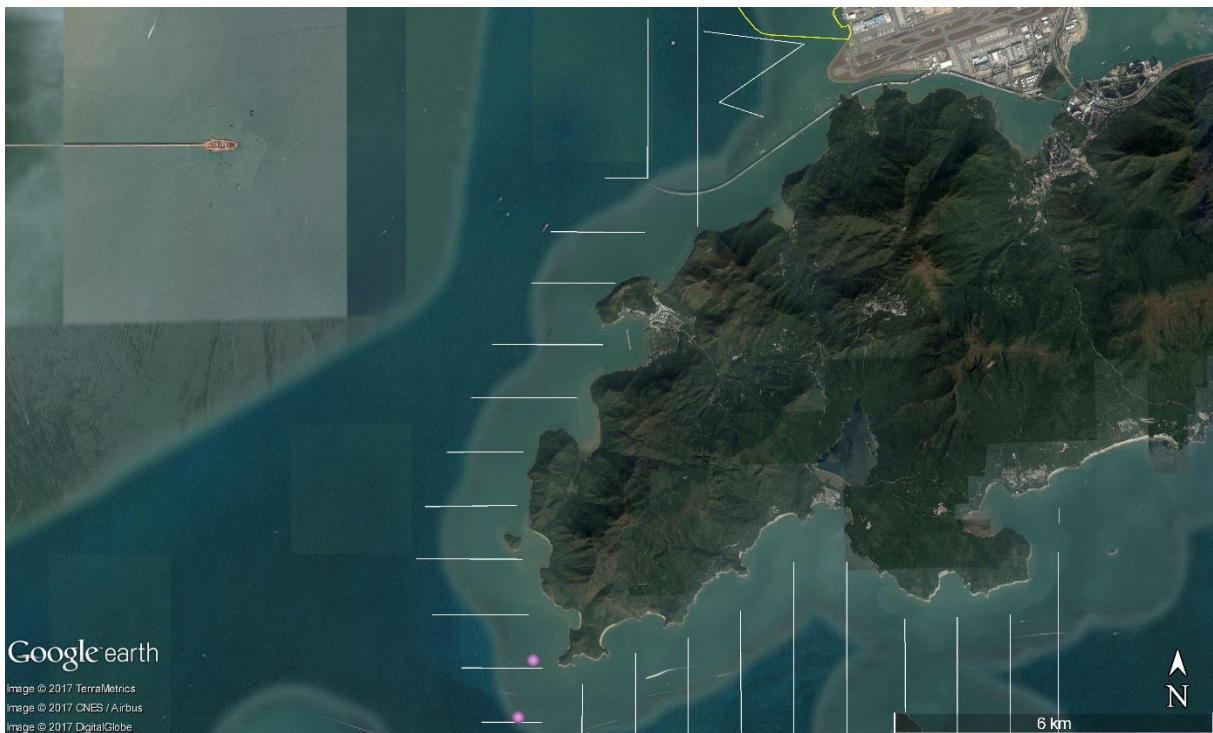
SLMM023



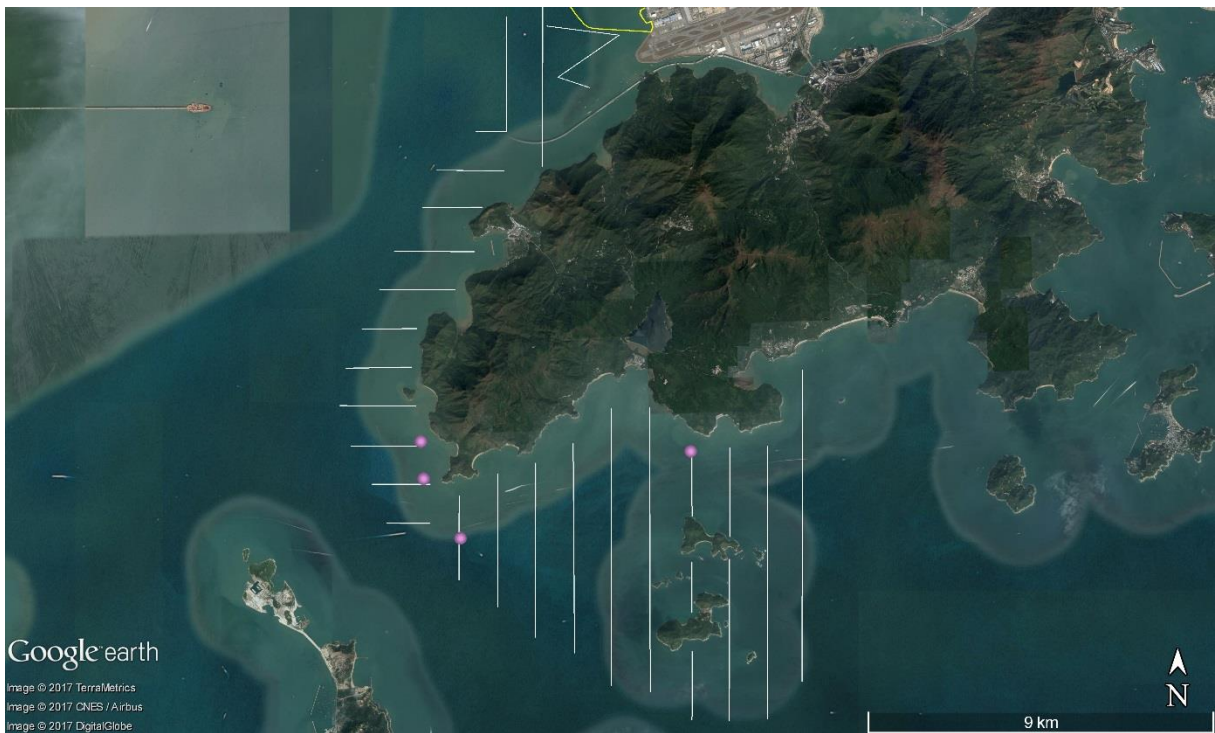
SLMM027



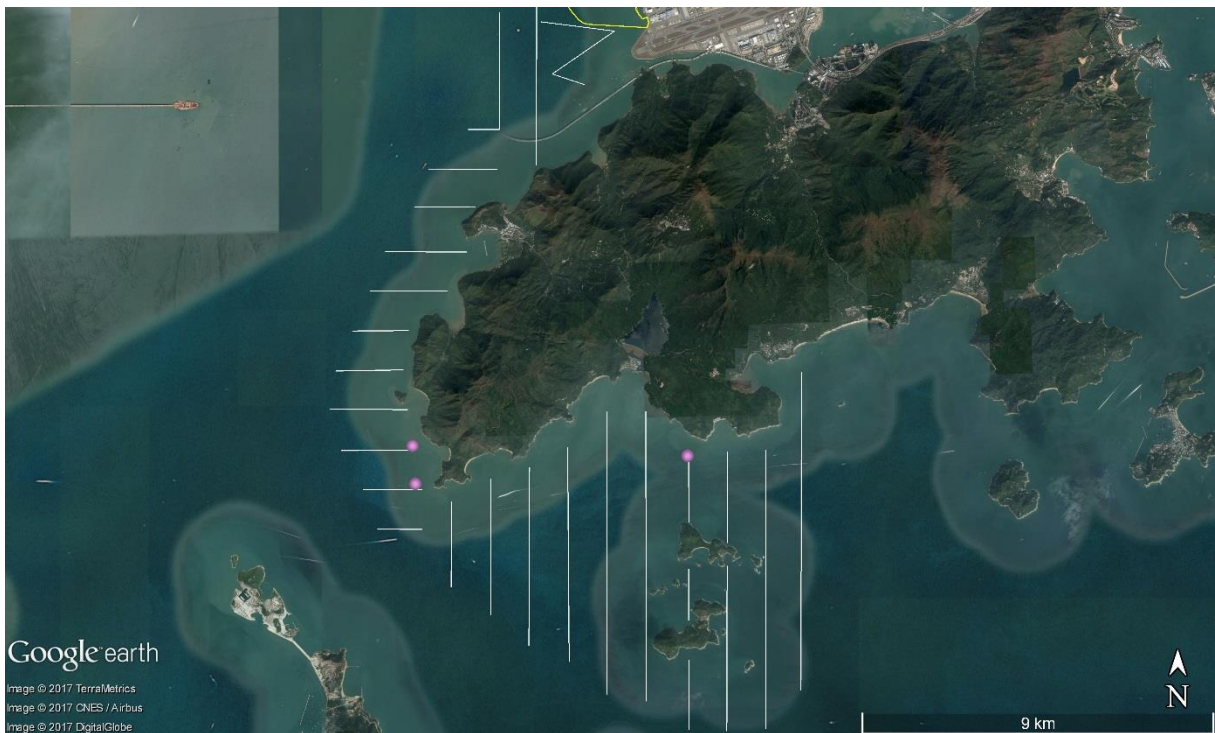
SLMM028



SLMM052



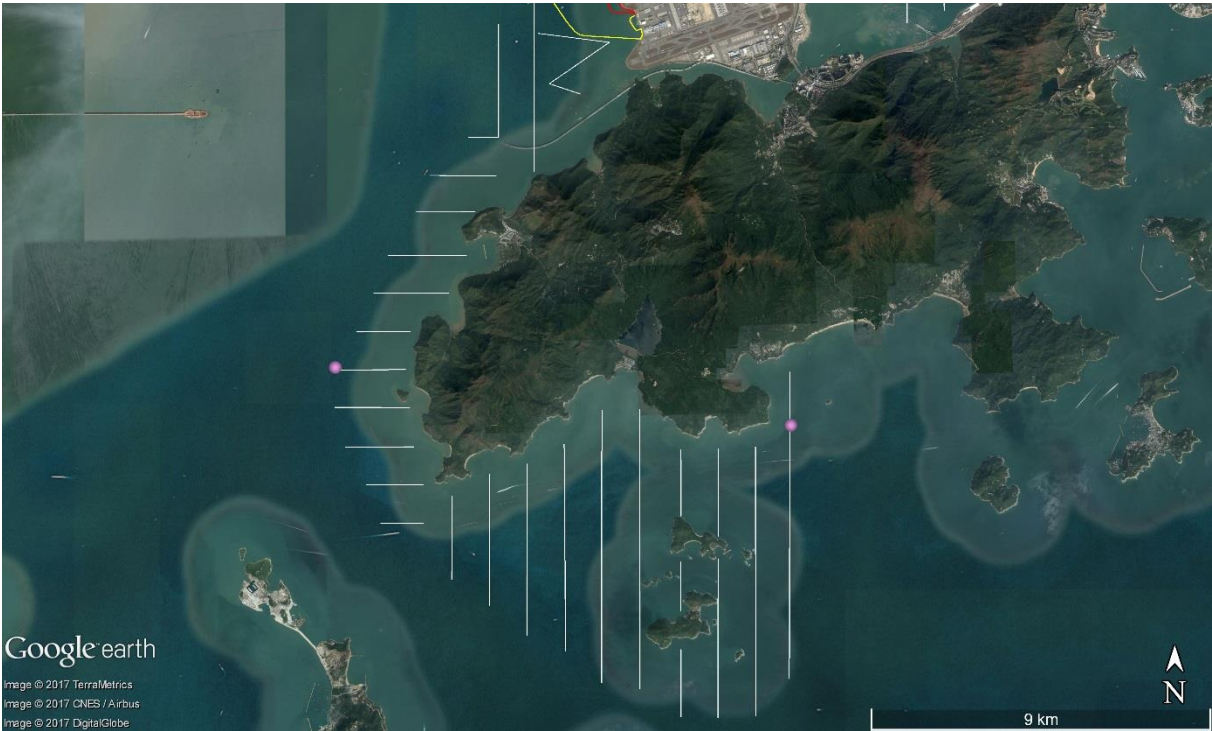
WLMM004



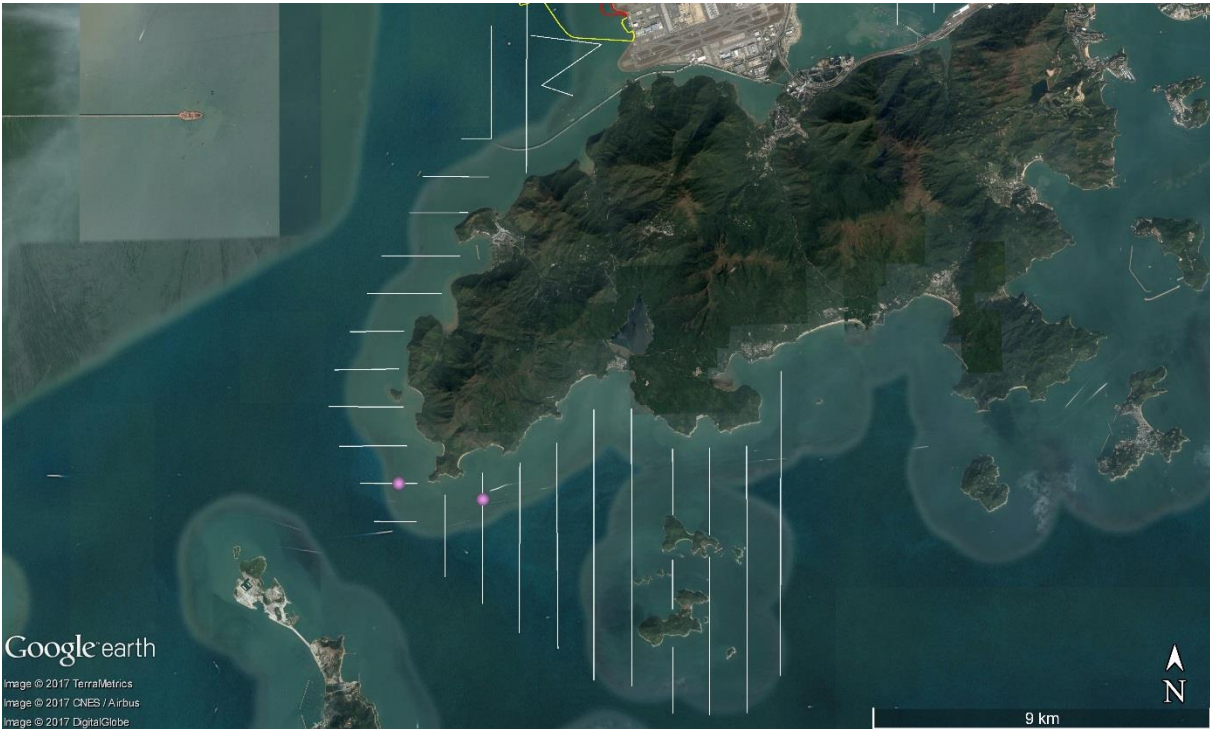
WLMM007



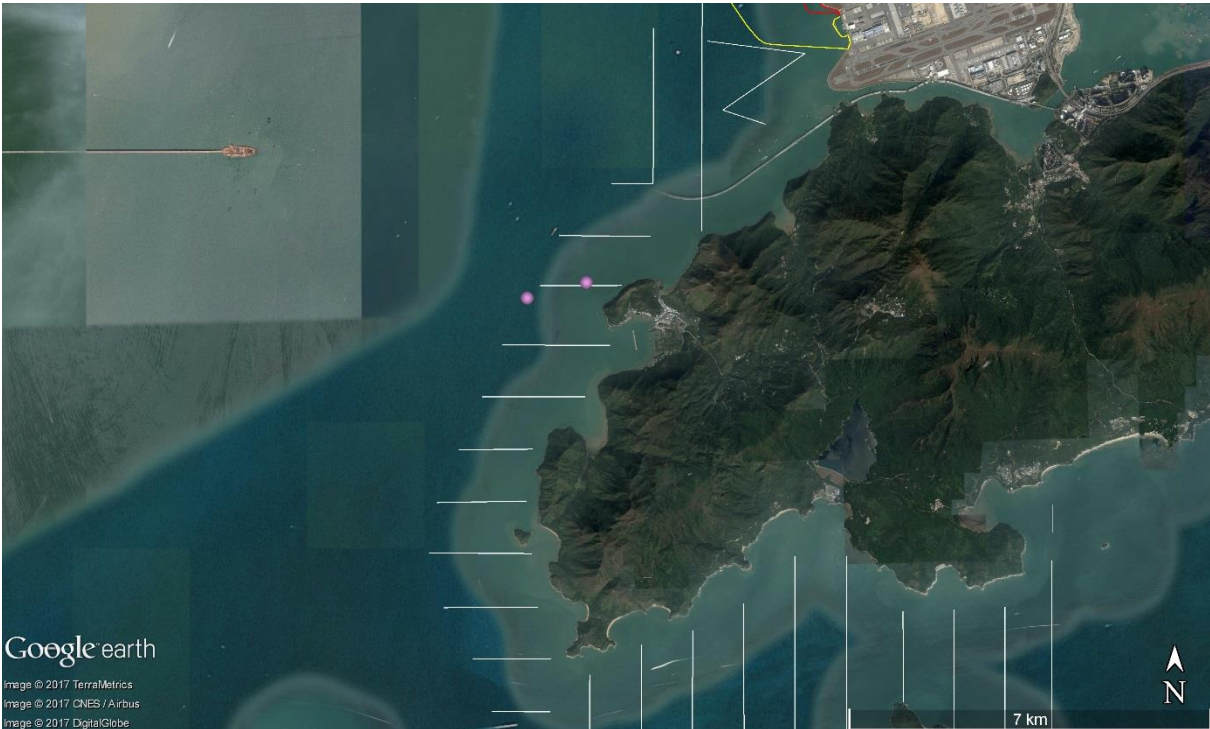
WLMM008



WLMM009



WLMM030



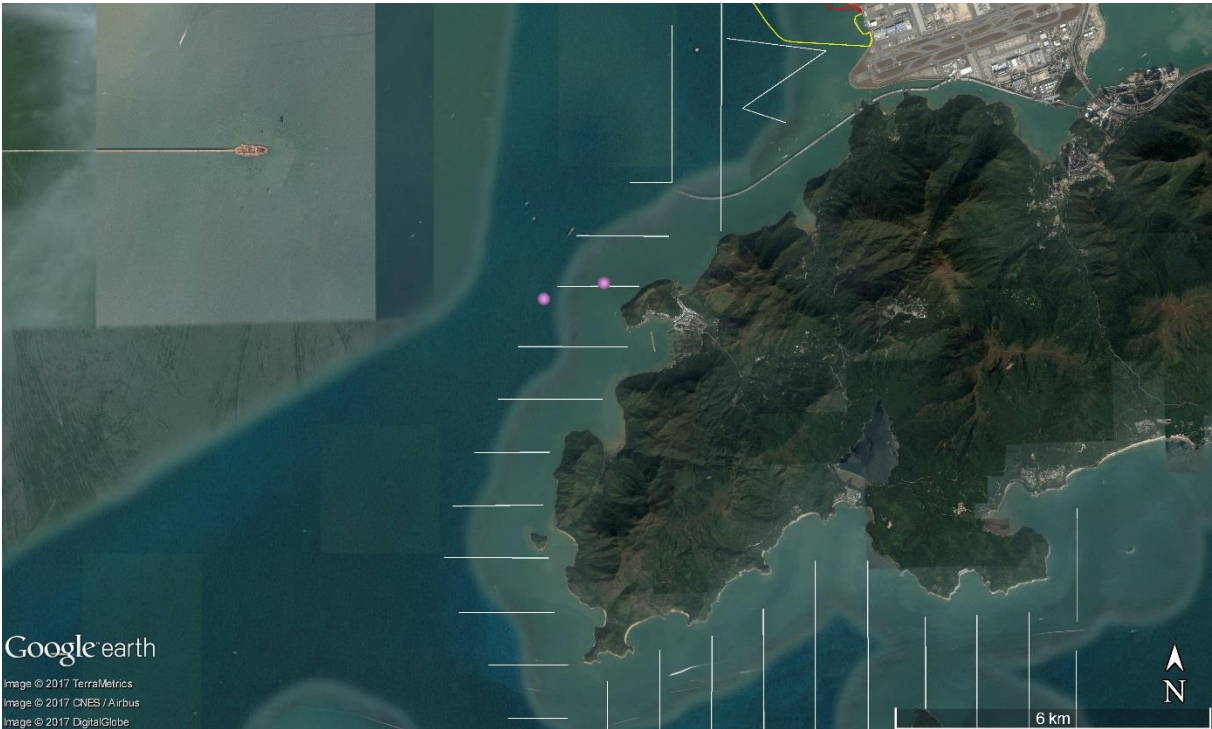
WLMM043



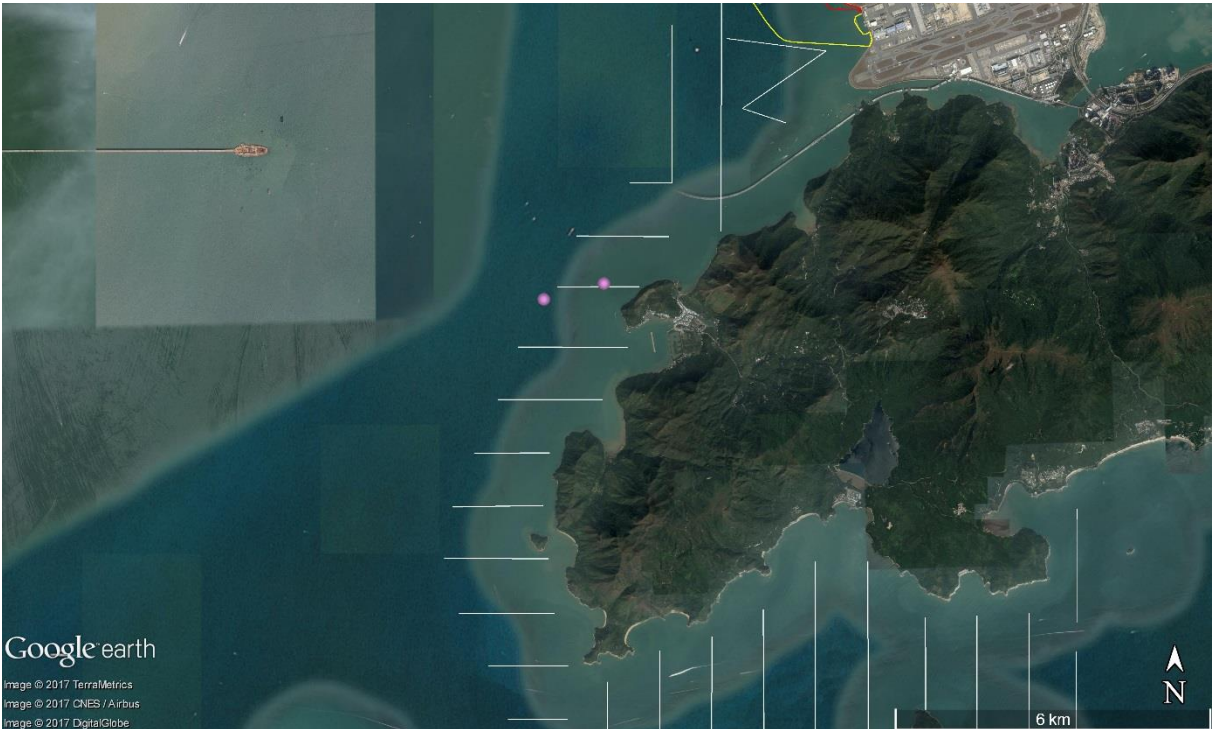
WLMM060



WLMM068



WLMM071



WLMM076



WLMM078



WLMM079



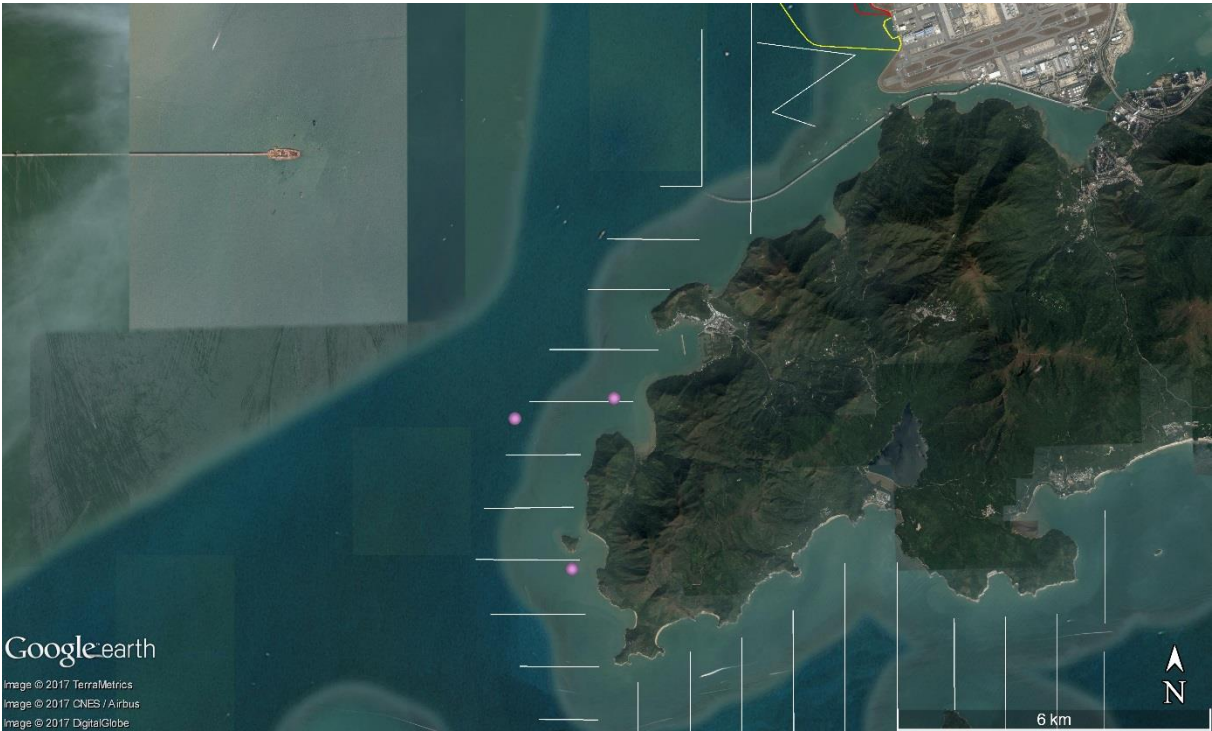
WLMM082



WLMM084



WLMM086



CWD Land-based Theodolite Tracking

CWD Groups by Survey Date

Date	Station	Start	End	Duration	Beaufort	Visibility	No. of Focal Follow	Dolphin Group Size
6/Apr/17	Sha Chau	8:35	14:35	6:00	2	3	0	N/A
7/Apr/17	Lung Kwu Chau	8:44	14:44	6:00	2	2-3	2	2
20/Apr/17	Lung Kwu Chau	8:50	14:50	6:00	1-2	2-4	4	2-3
25/Apr/17	Lung Kwu Chau	8:49	14:49	6:00	3-4	3-4	0	N/A
27/Apr/17	Sha Chau	8:50	14:50	6:00	2-4	1-4	0	N/A
17/May/17	Sha Chau	8:37	14:37	6:00	2	2	0	N/A
19/May/17	Lung Kwu Chau	8:39	14:39	6:00	1-3	2	0	N/A
22/May/17	Sha Chau	8:35	14:35	6:00	4	2-3	0	N/A
25/May/17	Lung Kwu Chau	8:40	14:40	6:00	3	2-3	1	5
29/May/17	Lung Kwu Chau	8:41	14:41	6:00	2-3	2	1	2
22/Jun/17	Lung Kwu Chau	8:44	14:44	6:00	2-3	2	0	N/A
23/Jun/17	Sha Chau	8:44	14:44	6:00	2-3	1-2	0	N/A
26/Jun/17	Lung Kwu Chau	8:37	14:40	6:03	1-3	2	5	3-5
27/Jun/17	Sha Chau	8:39	14:39	6:00	2-3	1-2	0	N/A
29/Jun/17	Lung Kwu Chau	8:46	14:46	6:00	2-3	1	4	2-5

Visibility: 1=Excellent, 2=Good, 3=Fair, 4=Poor